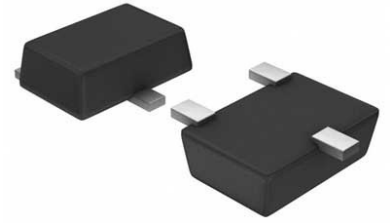


## EEPROM Serial-SPI 1K-bit 128 x 8 2.5V/3.3V/5V 6-Pin SOT-23 T/R



Images are for reference only

[Inquiry](#)

**Manufacturer:** [Microchip Technology, Inc](#)

**Package/Case:** SOT23-6

**Product Type:** Memory

**RoHS:** RoHS Compliant/Lead free 

**Lifecycle:** Active

### General Description

The Microchip 25AA010A is a 1 Kb Serial EEPROM utilizing the industry standard Serial Peripheral Interface (SPI) compatible serial bus. The device is organized as one block of 128 x 8-bit and is optimized for use in consumer electronics, industrial, medical, and automotive applications where reliable and dependable nonvolatile memory storage is essential. Software write protection allows the user to protect 1/4, 1/2, or the entire memory array. A hardware write protect pin is also provided, which additionally protects against inadvertent writes to the status register and memory array. The EEPROM is available in a variety of space-saving packaging options.

### Key Features

10MHz Maximum clock speed

Byte and page-level write operations

Write page mode

Sequential read

Self-timed erase and write cycles 5ms maximum

Block write protection - Protect none, 1/4, 1/2 or all of array

Built-in write protection

Power-on/off data protection circuitry

Write enable latch

Write-protect pin

High reliability

Endurance - 1000000 erase/write cycles

Data retention - >200 years

ESD protection - 4000V

## Recommended For You

---

### **SST25VF080B-50-4C-S2AF**

Microchip Technology, Inc

SOP8

### **AT25256B-SSHL-T**

Microchip Technology, Inc

SOP8

### **AT24C256C-SSHL-T**

Microchip Technology, Inc

SOP8

### **AT25040B-SSHL-B**

Microchip Technology, Inc

SOP-8

### **AT25128B-SSPDGV-T**

Microchip Technology, Inc

SOP8

### **23K256-I/SN**

Microchip Technology, Inc

SOP8

### **AT27C256R-70JU**

Microchip Technology, Inc

PLCC32

### **25AA1024-I/SM**

Microchip Technology, Inc

SOP8

### **AT25320B-SSHL-T**

Microchip Technology, Inc

SOP8

### **25AA1024T-I/MF**

Microchip Technology, Inc

DFN-8

### **AT25512N-SH-T**

Microchip Technology, Inc

SOP8

### **25LC1024-I/SM**

Microchip Technology, Inc

SOP8

### **25AA256T-I/SN**

Microchip Technology, Inc

SOP8

### **25LC640A-I/SN**

Microchip Technology, Inc

SOP8

### **AT25640B-SSHL-T**

Microchip Technology, Inc

SOP8