
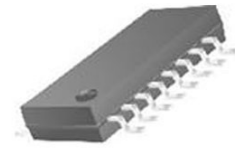


## Dual Transmitter/Receiver RS-232 16-Pin SOIC N T/R

<b>Manufacturer:</b>	<a href="#">MaxLinear, Inc</a>
<b>Package/Case:</b>	SOP16
<b>Product Type:</b>	Drivers
<b>RoHS:</b>	RoHS Compliant/Lead free 
<b>Lifecycle:</b>	Active



Images are for reference only

[Inquiry](#)

### General Description

Avaq Semiconductor offers the highly versatile and reliable SP232ACN-L/TR driver, produced by MaxLinear, Inc. With its multifunctional and high-performance capabilities, this component is an excellent choice for a wide range of electronic projects.

To ensure that you have all the necessary information to make the most of this component, Avaq provides a free datasheet PDF, as well as circuit diagrams, pin layouts, pin details, pin voltage ratings, and equivalent components for the SP232ACN-L/TR.

Avaq also offers free samples. Simply fill out and submit the sample request form to receive your free samples for testing. If you have any questions, please feel free to contact us at ar

### Recommended For You

<b>SP3232EEA-L</b>	<b>SP3232ECY-L</b>	<b>SP3485EN-L/TR</b>
MaxLinear, Inc	MaxLinear, Inc	MaxLinear, Inc
SSOP-16	TSSOP	SOP-8
<b>SP3232ECN-L</b>	<b>SP3232ECA-L</b>	<b>SP232ECN-L</b>
MaxLinear, Inc	MaxLinear, Inc	MaxLinear, Inc
SOP-16	SSOP16	SOP
<b>SP202EEN-L/TR</b>	<b>SP485CN-L/TR</b>	<b>SP3071EEN-L</b>
MaxLinear, Inc	MaxLinear, Inc	MaxLinear, Inc
SOP16	SOP8	SOP8
<b>SP3082EEN-L</b>	<b>SP336ECY-L</b>	<b>SP3491CN-L</b>
MaxLinear, Inc	MaxLinear, Inc	MaxLinear, Inc
SOP8	TSSOP-28	SOP14
<b>SP5301CN-L</b>	<b>SP331CT-L</b>	<b>SP232ACT-L/TR</b>
MaxLinear, Inc	MaxLinear, Inc	MaxLinear, Inc
SOP14	SOP28	SOP16