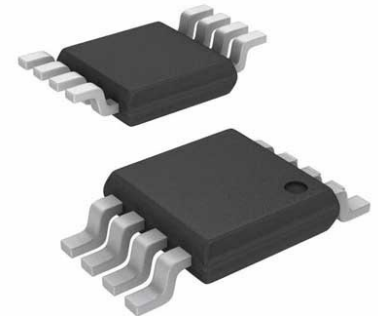


## RF Switch SPDT 0MHz to 3GHz 16dB Automotive 8-Pin MSOP T/R



Images are for reference only

[Inquiry](#)

**Manufacturer:** [Analog Devices, Inc](#)

**Package/Case:** MSOP8

**Product Type:** Switches

**RoHS:** RoHS Compliant/Lead free 

**Lifecycle:** Active

### General Description

The HMC574AMS8E is low-cost SPDT switch in 8-lead MSOP packages for use in transmit/receive applications which requires very low distortion at high incident power levels. The device can control signals from DC to 3 GHz and is especially suited for Cellular/3G infrastructure, WiMAX and WiBro applications with only 0.3 dB typical insertion loss. The design provides 5 watt power handling performance and +63 dBm third order intercept at +8 Volt bias. RF1 and RF2 are reflective shorts when “Off.”

### Key Features

- Low insertion loss: 0.3 dB
- High third order intercept: +63 dBm
- Isolation: 30 dB
- Single positive supply: +3 to +8V
- SMT package: MSOP8

### Application

- Cellular/3G infrastructure
- Private mobile radio handsets
- WLAN, WiMAX and WiBro
- Automotive telematics
- Test equipment

### Recommended For You

#### HMC624ALP4E

Analog Devices, Inc  
QFN24

#### HMC952ALP5GE

Analog Devices, Inc  
QFN

#### HMC361S8GE

Analog Devices, Inc  
SOP-8

#### HMC253AQS24E

Analog Devices, Inc  
QFN

#### HMC346MS8G

Analog Devices, Inc  
MSOP8

#### HMC1119LP4ME

Analog Devices, Inc  
QFN

**HMC659LC5**

Analog Devices, Inc

QFN

**HMC909LP4E**

Analog Devices, Inc

QFN

**HMC564LC4**

Analog Devices, Inc

QFN

**HMC1021LP4E**

Analog Devices, Inc

QFN

**HMC241AQS16E**

Analog Devices, Inc

SSOP16

**HMC424LP3E**

Analog Devices, Inc

QFN

**HMC662LP3E**

Analog Devices, Inc

QFN

**HMC8038LP4CE**

Analog Devices, Inc

QFN16

**HMC363S8G**

Analog Devices, Inc

SOP8