
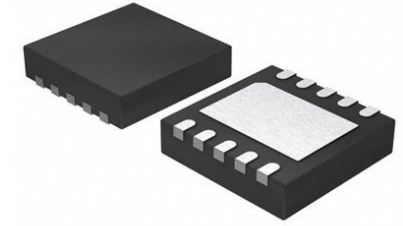


Inductance to Digital Converter 28ksps 24bit 16-Pin WSON EP

T/R

Manufacturer:	Texas Instruments, Inc
Package/Case:	WSON16
Product Type:	Discrete Semiconductor Modules
RoHS:	RoHS Compliant/Lead free 
Lifecycle:	Obsolete



Images are for reference only

[Inquiry](#)

General Description

Inductive Sensing is a contact-less, short-range sensing technology that enables low-cost, high-resolution sensing of conductive targets in the presence of dust, dirt, oil, and moisture, making it extremely reliable in hostile environments. Using a coil which can be created on a PCB as a sensing element, the LDC1000 enables ultra-low cost system solutions.

Inductive sensing technology enables precise measurement of linear/angular position, displacement, motion, compression, vibration, metal composition, and many other applications in markets including automotive, consumer, computer, industrial, medical, and communications. Inductive sensing offers better performance and reliability at lower cost than other, competitive solutions.

Key Features

- Magnet-free operation
- Sub-micron precision
- Adjustable sensing range (through coil design)
- Remote sensor placement (decoupling LDC from harsh environments)
- High durability (by virtue of contact-less operation)
- Insensitivity to environmental interference (such as dirt, dust, water, oil)
- 4.75 to 5.25V (analogue) and 1.8 to 5.25V (IO) Supply voltage
- 1.7mA Supply current (without LC tank)
- 16-bit Rp resolution
- 24-bit L resolution
- 5kHz to 5MHz LC Frequency range
- Green product and no Sb/Br

Application

Safety, Industrial, Metering, Computers & Computer Peripherals, Portable Devices, Medical

Recommended For You

LDC1612DNNT

Texas Instruments, Inc
WSON-12

LDC1312QDNTTQ1

Texas Instruments, Inc
WSON-12

LDC2114YFDR

Texas Instruments, Inc
DSBGA16

LDC1614QRGHTQ1

Texas Instruments, Inc
WQFN-16

LDC1051NHRJ

Texas Instruments, Inc
WSON-16

LDC1051NHRR

Texas Instruments, Inc
WSON16

LDC1000NHRJ

Texas Instruments, Inc
WSON16

LDC2112YFDR

Texas Instruments, Inc
DSBGA-16

LDC1000QPWRQ1

Texas Instruments, Inc
TSSOP16

LDC1312DNTR

Texas Instruments, Inc
WSON-12

LDC1041NHRT

Texas Instruments, Inc
16-WSON

LDC2114PWR

Texas Instruments, Inc
TSSOP16

LDC1312DNNT

Texas Instruments, Inc
WSON-12

LDC2114PWT

Texas Instruments, Inc
TSSOP16

LDC1041NHRJ

Texas Instruments, Inc
WSON