
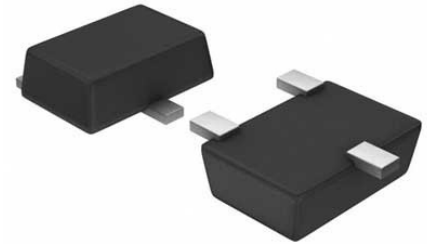


## Monitor 2.5V to 20V 5-Pin SOT-23 T/R

<b>Manufacturer:</b>	<a href="#">Diodes Inc</a>
<b>Package/Case:</b>	SOT23-5
<b>Product Type:</b>	Power Management ICs
<b>RoHS:</b>	RoHS Compliant/Lead free 
<b>Lifecycle:</b>	Active



Images are for reference only

[Inquiry](#)

## General Description

The ZXCT1010 is a high side current sense monitor. Using this device eliminates the need to disrupt the ground plane when sensing a load current. It is an enhanced version of the ZXCT1009 offering reduced typical output offset and improved accuracy at low sense voltage. The wide input voltage range of 20V down to as low as 2.5V make it suitable for a range of applications. A minimum operating current of just 4 $\mu$ A, combined with its SOT25 package make suitable for portable battery equipment.

## Key Features

- Low cost, accurate high-side current sensing
- Output voltage scaling
- Up to 2.5V sense voltage
- 2.5V – 20V supply range
- 300nA typical offset current
- 3.5 $\mu$ A quiescent current
- 1% typical accuracy
- SOT25 package

## Application

- Battery chargers
- Smart battery packs
- DC motor control
- Over current monitor
- Power management
- Programmable current source

## Recommended For You

### ZXRE125EFTA

Diodes Inc  
SOT-23

### ZXBM5210-SP-13

Diodes Inc  
HSOP8

### ZXCT1008FTA

Diodes Inc  
SOT-23-3

**ZXRE125DFTA**

Diodes Inc

SOT-23

**ZXCT1109QSA-7**

Diodes Inc

SOT-23

**ZXGD3006E6TA**

Diodes Inc

SOT23-6

**ZXGD3004E6TA**

Diodes Inc

SOT-23-6

**ZXBM5210-S-13**

Diodes Inc

SOP8

**ZXGD3114N7TC**

Diodes Inc

SO-7

**ZXGD3112N7TC**

Diodes Inc

SO-7

**ZXGD3108N8TC**

Diodes Inc

SOP-8

**ZXBM5409Q-N-U**

Diodes Inc

PDIP-8

**ZXCT1023DFGTA**

Diodes Inc

TDFN4

**ZXGD3111N7TC**

Diodes Inc

7-SO

**AP3012KTR-G1**

Diodes Inc

SOT23-5