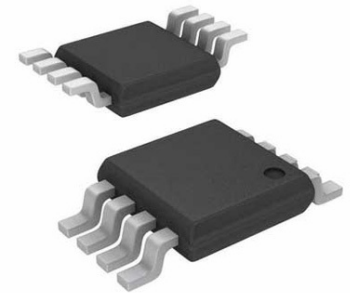


SP Amp Current Shunt Monitor Single 40V Automotive 8-Pin TSSOP T/R



Images are for reference only

[Inquiry](#)

Manufacturer: [Texas Instruments, Inc](#)

Package/Case: TSSOP8

Product Type: Amplifier ICs

RoHS: RoHS Compliant/Lead free 

Lifecycle: Active

General Description

The INA139-Q1 and INA169-Q1 (INA1x9-Q1) are high-side, unidirectional, current shunt monitors. Wide input common-mode voltage range, high-speed, low quiescent current, and TSSOP-8 packaging enable use in a variety of applications.

The device converts a differential input voltage to a current output. This current is converted back to a voltage with an external load resistor that sets any gain from 1 to over 100. Although designed for current shunt measurement, the circuit invites creative applications in measurement and level shifting.

Both the INA139-Q1 and INA169-Q1 are available in a TSSOP-8 package, and are specified for the -40°C to $+125^{\circ}\text{C}$ temperature range.

Key Features

Qualified for Automotive Applications

AEC-Q100 Qualified With the Following Results:

Device Temperature Grade 1: 40°C to 125°C

Ambient Operating Temperature Range

Device HBM ESD Classification Level 2

Device CDM ESD Classification Level C6

Complete Unidirectional High-Side Current Measurement Circuit

Wide Supply and Common-Mode Ranges

INA139-Q1: 2.7 V to 40 V

INA169-Q1: 2.7 V to 60 V

Independent Supply and Input Common-Mode

Voltages

Single Resistor Gain Set

Low Quiescent Current (60 μA Typical)

Wide Temperature Range: -40°C to $+125^{\circ}\text{C}$

Package: TSSOP-8

Recommended For You

INA3221AIRGVR

Texas Instruments, Inc
VQFN16

INA200AQDGKRQ1

Texas Instruments, Inc
MSOP8

INA196AIDBVT

Texas Instruments, Inc
SOT23-5

INA220AIDGSR

Texas Instruments, Inc
MSOP10

INA198AQDBVRQ1

Texas Instruments, Inc
SOT23-5

INA228AQDGSRQ1

Texas Instruments, Inc
VSSOP-10

INA237AQDGSRQ1

Texas Instruments, Inc
VSSOP10

INA168QDBVRQ1

Texas Instruments, Inc
SOT23-5

INA226AQDGSRQ1

Texas Instruments, Inc
VSSOP10

INA3221AQRGVRQ1

Texas Instruments, Inc
QFN16

INA195AIDBVR

Texas Instruments, Inc
SOT23-5

INA197AIDBVT

Texas Instruments, Inc
SOT23-5

INA213AQDCKRQ1

Texas Instruments, Inc
SC70-6

INA300AQDGSRQ1

Texas Instruments, Inc
VSSOP-10

INA196AIDBVR

Texas Instruments, Inc
SOT23-5