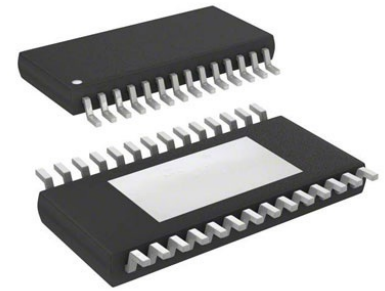


**Power Over Ethernet PD Controller 0V 67V 20-Pin HTSSOP
EP****Manufacturer:** [Texas Instruments, Inc](#)**Package/Case:** TSSOP**Product Type:** Power Management ICs**RoHS:** RoHS Compliant/Lead free **Lifecycle:** Active

Images are for reference only

[Inquiry](#)**General Description**

The TPS23750 integrates the functionality of the TPS2375 with a primary side dc/dc PWM controller. The designer can create a front-end solution for PoE-PD applications with minimum external components. The TPS23770 is identical to the TPS23750 with the exception of the undervoltage lockout turn-on voltage, which is compatible with legacy systems.

The PoE front end has all the necessary IEEE 802.3af functions including detection, classification, undervoltage lockout and inrush control. The PoE input switch is integrated within the TPS23750.

The dc/dc controller section is designed to support flyback, forward, and nonsynchronous low-side switch buck topologies.

The external switching MOSFET and current sense resistor provide flexibility in topology, power level, and current limit. The full-featured dc/dc controller includes programmable soft start, hiccup type fault limiting, 50% maximum duty cycle, programmable constant switching frequency, and a true voltage-output error amplifier. Additional protection features provide for robust designs.

Key Features

Complete 802.3af PoE Interface

Features derived from the TPS2375

100 V, 0.6A Internal Pass MOSFET

Standard and Legacy UVLO Choices

Fixed 140 mA Inrush Limit

Primary Side DC/DC Converter Control

Minimum External Component Count

Current Mode Control

Isolated and Non-Isolated Topologies

Programmable Operating Frequency

Current Sense Leading-edge Blanking

50% Duty Cycle Limiting

Voltage Output Error Amplifier

Internal PoE and Converter Sequencing

Industry-Standard 20 Lead Package

Industrial Temperature Range, -40°C to 85°C

APPLICATIONS

All PoE PD Devices Including:

Wireless Access Points

VoIP Phones

Security Cameras

Recommended For You

TPD3S014DBVR

Texas Instruments, Inc

SOT23-6

TPS2065CDBVR

Texas Instruments, Inc

SOT23-5

TPS2557DRBT

Texas Instruments, Inc

SON8

TPS2042BDR

Texas Instruments, Inc

SOP8

TPS2051BDR

Texas Instruments, Inc

SOP8

TPL7407LPWR

Texas Instruments, Inc

TSSOP16

TPS23753APWR

Texas Instruments, Inc
TSSOP14

TPS2116DRLR

Texas Instruments, Inc
SOT5X3-8

TPS259460ARPWR

Texas Instruments, Inc
VQFN-10

TPS23751PWPR

Texas Instruments, Inc
HTSSOP16

TPS65150QPWPRQ1

Texas Instruments, Inc
HTSSOP-24

TPS2410PWR

Texas Instruments, Inc
TSSOP-14

TPS22914BYFPR

Texas Instruments, Inc
DSBGA4

TPS2115ADRBR

Texas Instruments, Inc
VSON8

TPS2113ADRBR

Texas Instruments, Inc
SON8